

ESF-LiU Conference

# Religion, Gender and Human Rights: Challenges for Multicultural and Democratic Societies

Scandic Linköping Vast, Sweden

21-25 June 2011

Chairs: **Niamh Reilly**, NUI, Galway, IE; **Stacey Scriver**, NUI, Galway, IE & **Sara Silvestri**, City University London, UK

This conference will examine the nexus of religion, gender, identity, human rights and politics with a particular focus on Europe in a context of globalisation. It will fill a gap in current literature on religion, politics and society, which tends to ignore or treat as secondary the gendered dimensions of these developments. Toward this end, the conference seeks to advance knowledge and understanding, and to build a coherent research network, around the following core goals to: 1) Move gender from the periphery to the centre of contemporary debates about the role of religion in public and political life; 2) Stimulate new feminist and gender scholarship concerned with the critical (re)interpretation of religions and gendered faith-based practices across different religious traditions; 3) Foreground and apply an 'intersectional' lens to issues of religion, gender and women's human rights, and bring into dialogue feminist theorizing on gender and religion across global 'South' and global 'North' perspectives; 4) Expand the horizon of gender-focused human rights analysis at the nexus of religion, gender, citizenship and rights. The conference will bring together senior and emerging scholars across a range of relevant disciplines including, but not limited to, political science and international relations, sociology, gender and women's studies, human rights and socio-legal studies, development, anthropology, European studies, and religious studies.

● **Strand 1: Identity, representation and multiculturalism**

**Panel I** - Gender and religion: identity, religious subjectivities and law and politics; **Roundtable I** - Gender, religion and identity: immigration, integration and multiculturalism.

● **Strand 2: Religious subjectivities and critiques**

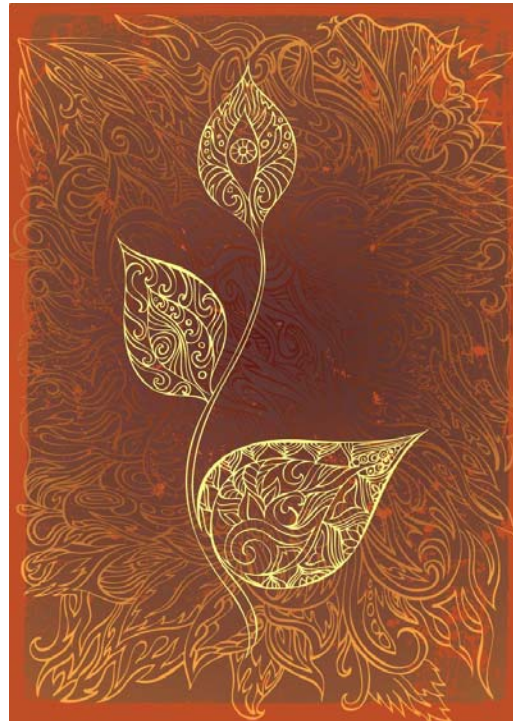
**Panel II** - Religious subjectivities and gender critiques of religions - Foregrounding feminist and gender studies in religion across different traditions;

**Roundtable II** - 'Religion' in the academy through a gender lens: challenges in theory, methods and practice - A conversation between scholars working 'in religion' and 'on religion'.

● **Strand 3: Law, rights, states and politics**

**Roundtable III** - Gender, religion, human rights and the state - Focus on the role of law and state in regulating and/or accommodating 'religion', religious expression and balancing 'rights'; **Panel III** - Secularization, secularism and the public sphere: engendering debates - Exploring competing ideas about 'secularization' and the principle of secularism in multicultural democracies;

**Panel IV** - Gender and religion in international/transnational politics and global issues - Religion in national/transnational politics and policy making; religious identity/religious actors in conflict/post-conflict contexts.



**Invited Speakers will include:**

**Fadwa Al-Labadi**, Al-Quds U., IL; **Valerie Amiraux**, U. Montreal, CA; **Tina Beattie**, Roehampton U., UK; **Sarah Bracke**, KU Leuven, BE; **Geraldine Finn**, Carleton U., CA; **Charlotte Fonrobert**, Stanford U., US; **Naomi Goldenberg**, U. Ottawa, CA; **Breda Gray**, U. Limerick, IE; **Anka Grzywacz**, Catholics for Choice, PL; **Fatemeh Haghghatjoo**, UMB Boston, US; **Harriet Harris**, U. Edinburgh, UK; **Anne Jenichen**, U. Bremen, DE; **Catarina Kinnvall**, Lund U., SE; **Titia Loenen**, Utrecht U., NL; **Vesna Malesevic**, NUI Galway, IE; **Elif Medina**, U. Vienna, AT; **Rubya Mehdi**, U. Copenhagen, DK; **Stephanie Mitchem**, U. South Carolina, US; **Jeff Redding**, CNRS, FR / St. Louis U., US; **Sawitri Saharso**, U. Twente, NL; **Naveed Sheikh**, Keele U., UK; **Sara Silvestri**, City U. London, UK; **Jawad Syed**, U. Kent, UK; **Andrew Yip**, U. Nottingham, UK; **Nira Yuval Davis**, U. East London, UK

**Application form & programme** available from

[www.esf.org/conferences/11352](http://www.esf.org/conferences/11352)

**Closing date for applications: 29 March 2011**

**Additional sponsorship provided by the Global Women Studies Programme, NUI Galway.**

European Science Foundation | Research Conferences Unit  
149 avenue Louise | Box 14 | Tour Generali, 15th Floor | Brussels | Belgium  
Tel: + 32 (0)2 533 2020 | Fax: +32 (0)2 538 8486  
Email: [conferences@esf.org](mailto:conferences@esf.org) | [www.esf.org/conferences](http://www.esf.org/conferences)